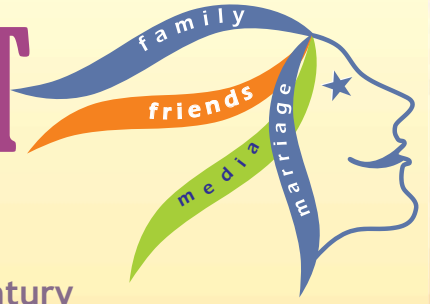




Bharatiya Jain Sanghatana's

# Empowerment of Girls



To face Social Challenges of 21st century

## Our Family Rules

### For Family

1. Collectively decide & abide by family **Principles, Values** and **Beliefs**.
2. Organize monthly **Family meetings**, which all family members must attend.
3. **Appreciate** liberally. **Criticise** only when alone. Never **compare**.
4. Create an atmosphere of **Trust & Faith** and never break it.
5. **Learn to Listen** and understand other's point of view.
6. Create **opportunities** and utilize them to increase **Communication**.
7. **Convince or get convinced**. Then accept the decision cheerfully.
8. Know the art of saying **"NO!"** and accepting **"NO!"** from others.
9. **Express and Discuss** your **Views** frankly, when watching TV & films.
10. **Opinions will differ**, learn to **respect** them.

### For Parents

11. Spend **Quality Time** together. Increase sharing and strengthen support.
12. Be your **child's Best Friend**, provide support in stressful situations.
13. **Protection is appreciated**, overprotection hampers growth.
14. Silence means consent. Beware! "What You can **see** you can **say & do**"
15. Involve children in selecting their Life partner and **don't pressurise** if they say "NO!"

### For Girls

16. **All Mistakes** cannot be forgiven and forgotten.
17. **Share domestic chores** it is our family and our home.
18. Treat male & female friends **Differently**.
19. Be deliberate and take time to **Judge friends**.
20. **Do not insist on spending a Night out at a friends place**.
21. Weigh short-term **pleasures** against long-term **consequences**.
22. Evaluate decisions using both, **Mind and Heart**.
23. **Seek parental advice** and support whenever you have a problem.
24. **Right is Right & Wrong is Wrong**.  
Wrong can never be proved as right, hence accept.
25. **Evaluate your Life partner** using guidelines given by BJS.